

INSIDE
THIS ISSUE:

Officer /
Committee
List 2

Events 3
Calendar

President's
Message 4

Meeting Info 5
(April 6, 2012
DEADLINE)

Golf Picnic 6
YEA 8

Job Postings 10

Historian 12

Research 13

CTTC 14

Meeting
Minutes 15

New Members 17

PAOE Points 17

Continuing
Education 18

CRC News 24

Society News 28

ASHRAE Rochester



VOLUME 7, ISSUE 8

APRIL 1, 2012

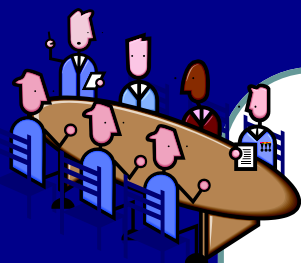
TUESDAY, MAY 15, 2012 ASHRAE Picnic / Golf Tournament



Reservation Deadline is...
May 8th, 2012

***There is a limited amount of tickets this year
on a first come basis***

Refer to page 6 for more details



Chapter Officers

President

Jeffrey Ellis
585-232-3440
ellis@airsystemsbalancing.com

President Elect

Michelle Sommerman
585-232-5135
msommerman@bergmannpc.com

Vice President/Tech

Robert Wind
585-341-3172
rwind@ibceng.com

Secretary

Edward J. Burns
(585) 872-6681
ejb@mechtechhvac.com

Treasurer

Christina Walter
585-486-2148
cmwalter@trane.com

Committee Chairs

CTTC/Programs

Michelle Sommerman 585-232-5135
msommerman@bergmannpc.com

CTTC/TEGA

Jeff Davis 585-381-3360(136)
jdavis@turnerengineering.com

CTTC/ Refrigeration

Michael Nohle 585-545-5522
mikenohle@aol.com

Historian

Lee Loomis 585-738-3079
leeloom@aol.com

Membership

Bill Clark 585-507-1961
wjclark@dayasi.com

YEA

Chris Lukasiewicz
585-381-3360 (135)
clukasiewicz@turnerengineering.com

Board of Governors

William Murray (3rd Year)
585-641-7121
bmurray@ec4b.com

Tim Duprey (3rd Year)
585-924-9360
tduprey@pascobas.com

Eric C. Smith (2nd year)
585-381-3360
esmith@turnerengineering.com

Jeff Close (2nd year)
585-289-6816
Jeff.close@pres-services.com

William J. Clark (1st Year)
585-507-1961
wjclark@dayasi.com

Jaimee Reynolds (1st year)
585-325-6004
jreynolds@pathfinder-ea.com

Beth Smith (1st year)
585-272-0110
bsmith@vpsupply.com

Student Activities

Al Rodgers 585-325-6004
arodgers@pathfinder-ea.com

Newsletter Editor

Jaimee Reynolds 585-325-6004
jreynolds@pathfinder-ea.com

Attendance & Reception

Timothy Duprey 585-924-9360
tduprey@pascobas.com

Building Simulation User's Group (BSUG)

Bill Bishop 585-325-6004
wbishop@pathfinder-ea.com

Webmaster

Kevin Wind 585-263-1280
kwind@rochester.rr.com

Research Promotion

Jeff Close 585-289-6816
Jeff.close@pres-services.com

Beth Smith 585-272-0110(3010)
bsmith@vpsupply.com

ASHRAE 2011-2012 Meeting Schedule

Date	Event	pdh / Theme	Location	Schedule
09/12/11	Annual ASHRAE Clambake James Bittker, NYSERDA New Construction Program	Membership Promotion	Burgundy Basin	5:00 PM
10/10/11	Dick Sherren Rooftop Wind Restraints	(1) pdh available	Mario's	12:00 PM
11/14/11	Stanley Mumma, DL Region III Chilled Surfaces and DOAS	(1) pdh available	Mario's	12:00 PM
12/12/11	BIM - Joint ASPE Meeting John Jansen, Imaginit Technologies	Research Recognition (1) pdh available	Mario's	12:00 PM
01/09/12	Tribute to Lynn Bellenger Enid Cardinal, Director of Sustainability at RIT Topic, TBD Bill Bishop - 5 min on BSUG	Awards Student Night	RIT	Dinner (Time, TBD)
02/10/12	Annual ASHRAE Valentines Dinner Dance	---	Inn on Broadway	7:00 PM
02/13/12	Steve Beck ASHRAE IAQ Guide, current work on Building Performance Metric	Membership Promotion () pdh available	Mario's	12:00 PM
03/12/12	Drury Crawley, DL Region III AEDG's to Net-Zero Buildings and Future Trends in Simulation	Research Promotion (1) pdh available pending	Mario's	12:00 PM
04/09/12	Refrigeration Meeting Ron Vogl, Honeywell Refirgerants Group Update on R-22	Student Meeting (1) pdh available pending	Mario's	12:00 PM
05/15/12	Annual ASHRAE Golf Outing and Picnic	---	Ravenwood Golf Club	9:30 AM Golf 4:30 - 8:00 Picnic

Mission Statement

ASHRAE will advance the arts and sciences of heating, ventilation, air conditioning, refrigeration and related human factors to serve the evolving needs of the public and ASHRAE members.



Shaping Tomorrow's
Built Environment Today

Vision Statement

- will be the global leader in the arts and sciences of heating, ventilation, air conditioning and refrigeration.
- will be the foremost, authoritative, timely and responsive source of technical and educational information, standards and guidelines.
- will be the primary provider of opportunity for professional growth, recognizing and adapting to changing demographics, and embracing diversity.



Jeff Ellis, 2011-2012 President

I would like to thank Drury Crawley, ASHRAE Distinguished Lecturer from Region III for his presentation at our March lunch meeting. His topic, "AEDG's to Net-Zero Buildings and Future trends in Simulation" was very well-received.

I would also like to thank Michelle Sommerman and Rob Wind (program and technical session chairs) for the work they put in to line up our slate of speakers during the 2011-2012 calendar year. There is a great deal of time and effort put forth to come up with relevant topics, seek out the appropriate speaker, get required documentation for pdh approvals, and submit follow-up documentation to Region 1. We are fortunate to have so many willing volunteers to ensure that our chapter is successful.

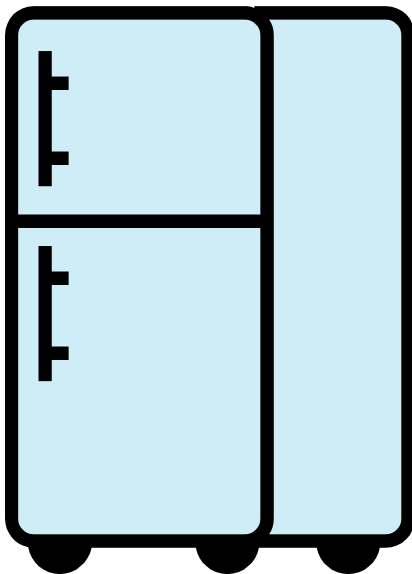
Please note that due to a scheduling conflict Wegmans will be unable to host us for our April Meeting. Mike Nohle our refrigeration chair has lined up Ron Vogl from Honeywell Refrigerants Group to give us an update on R-22, global warming and associated retrofit products.

The time and venue has been changed to Noon at Mario's. WE are hoping to have (1) pdh available for this meeting.

Please take time to explore the updated Rochester ASHRAE Chapter website at <http://rochester.ashraechapters.org/>

Thanks for the continued support of YOUR local chapter of ASHRAE.

STUDENTS of ASHRAE UPDATE



The **RIT Energy Innovation Club** and the student chapter of ASHRAE presented their preliminary research results from the club's NYS P2I sponsored research project on building systems for demand response control of residential refrigerators and freezers. **Tayler Swanson** was awarded a best presentation prize at the International Energy Conference at Farmingdale last week. They will also be doing a conference paper at the P2I conference in Albany in late April.

The students at RIT are still in need of old ASHRAE Guide and Data books. If you have any, especially Fundamentals, please email Al Rodgers (arodgers@pathfinder-ea.com) to make arrangements to pick up.

Monthly Meeting

April ASHRAE Meeting – 1 PDH **APPROVED**

Monday, April 9, 2012

Location: Mario's Italian Steakhouse 2740 Monroe Ave, Rochester

Time: 12 PM with Buffet Lunch Served

Cost: \$25.00, PayPal On-Line *or* cash/check at door

Speaker: Ron Vogl, Honeywell-Genetron Refrigerants

Criteria and Techniques for Selecting Refrigerants

For our April presentation Ron will review refrigerant requirements, current regulations, and available refrigerants and their application in retrofit installations as an R22 replacement in HVAC and R equipment. He will also give us an introduction to the next generation of refrigerants.

Ron is a graduate of the State University of New York where he majored in HVAC & R design theory. He has accrued over thirty years of experience touching all facets of the industry as a wholesaler, sales engineer, contractor, business owner, energy auditor, designer and consultant. Ron has designed, sold and installed mechanical systems ranging in complexity from walk in coolers to industrial refrigeration plants and supermarkets. As the owner of a mechanical contracting company Ron specialized in the design of environmental chambers and cold clean rooms for use by the pharmaceutical, chemical and food production industries. For the last eight years he has worked as a research and development and technical service engineer for Honeywell-Genetron Refrigerants. Currently, Ron is the Technical Marketing Manager for the Honeywell Refrigerants Group, Morristown, New Jersey.

Cash or check payment still accepted at the door with your reservation. Remember, as an option, we now have on-line payments available via PayPal.

<< *Pay for Meeting Registration online via PayPal (no PayPal account required)* >>
Use the following link: <http://rochester.ashraechapters.org/meetings.html>

Please RSVP no later than noon Friday, April 6th to Tim Duprey
Phone: 585.924.9360 or Email: tduprey@pascobas.com

Respectfully,

Tim, Attendance Chair

Attention Members:

Just a reminder that all members that reserve a spot for the monthly meeting will be responsible for that reserved space.

Members have until 12:00 pm the day of the RSVP deadline to cancel their meeting reservation.

Failure to comply with this rule will result in the attendee being responsible for the payment of that reservation.

ASHRAE Rochester Chapter Officers



2012 ASHRAE PICNIC SPONSORSHIP FORM

Tuesday, May 15, 2012

 <p>RAVENWOOD GOLF CLUB</p>		
<p>Ravenwood Golf Course 929 Lynaugh Road Victor, NY 14564</p> <p>11:00 AM – 4:30 PM - Golf</p>	<p>Picnic: 4:30 PM-8:00 PM 4:30 PM - 6:00 PM Cocktails and Hors d'oeuvres 6:00 PM - 8:00 PM Dinner Catered By: Dinosaur Barbeque at Ravenwood Golf Club</p> 	<p>Thank you in advanced for supporting this long standing Rochester ASHRAE Chapter tradition.</p>

Please include check (on notes put what sponsorship you made) and make payable to:
ASHRAE Rochester Chapter
and mail to:
Attention: Edward J. Burns
Mech Tech HVAC, Inc.
1805 Tebor Road Suite 8
Webster, NY 14580
*Any questions, call Ed at (585) 872-6681
Email: ejb@mechtechvac.com*

Please fill out so we can correctly recognize you or your company:

Company Name: _____

OR

Individual Name: _____

Address: _____

City: _____ State: _____ Zip: _____




Phone: (Work) _____ (Home) _____

Sponsorship Form		
<i>Sponsorship Name</i>	<i>X here for Sponsorship</i>	<i>Sponsorship Amt.</i>
Major Door Prize Sponsor – Gift/Item or Cash Donation- \$200 or more.		
Gold - \$250.00 - Hole Sponsorship and Recognition at Picnic		\$250.00
Silver - \$150.00 - Hole Sponsorship		\$150.00
Bronze - \$100.00 - Recognition at Picnic		\$100.00
Prize Sponsor - \$175.00 - Longest Drive		\$175.00
Prize Sponsor - \$175.00 - Closest to Pin		\$175.00
Total Check Amount:		



TUESDAY, MAY 15, 2012
ASHRAE Picnic / Golf Tournament
To be held at
Ravenwood Golf Course

Reservation Deadline is... **May 8th, 2012**
 (There is a limited amount of tickets this year on a first come basis)

 RAVENWOOD GOLF CLUB	
<p>Ravenwood Golf Course 929 Lynaugh Road Victor, NY 14564 Golf Registration 9:30 – 10:45 Juice, Scones and Coffee Served 11:00 am - Shotgun Start</p>	<p>Picnic: 4:30 PM-8:00 PM 4:30 PM - 6:00 PM Cocktails and Hors d'oeuvres 6:00 PM - 8:00 PM Dinner Catered By: Dinosaur Barbeque at Ravenwood Golf Club</p>  <p>Four Man Scramble and Optional Skins Game.</p> <p><u>Golf includes:</u></p> <ul style="list-style-type: none"> ➤ Golf ➤ Cart ➤ Driving Range ➤ Prizes ➤ On course beverages and food at the turn

**NO TICKETS WILL BE SOLD OR DISTRIBUTED AT THE DOOR! RES HAS THE TICKETS THIS YEAR.
 TICKETS WILL BE MAILED TO YOU OR CAN BE PICKED UP AT THE
 ROCHESTER ENGINEERING SOCIETY.**

**Please include check and make payable to:
 "ASHRAE – Rochester Chapter"**

Return this form....
 Mail prior to **May 8th, 2012** to:
 Attention: Reservation Clerk
 Rochester Engineering Society
 150 State Street
 Rochester, New York 14614
 Any questions, call (585) 254-2350
 Email: res@frontiernet.net

Address where you would like your picnic tickets sent to:

Company: _____

Contact Name: _____

Address: _____

City: _____ State: _____ Zip: _____

Phone: (Work) _____ (Home) _____

Entry Form			
Ticket Request Form			
Event	Fee Amount	No. Attending	Total
Golf	\$90.00		\$
Picnic	\$50.00		\$
OR:			
Golf and Picnic (SAVE \$10.00)	\$130.00		\$



ROCHESTER CHAPTER COMMITTEE REPORT
2012 March 26

MISSION STATEMENT

The primary objective for the YEA Committee is to enhance our member benefits for young professional ASHRAE members by identifying activities and services focused on their needs.

- *National YEA Committee*

ASHRAE Group Learning Texts Program: Fundamentals of Water System Design



Thank you to everyone who attended this series of group learning sessions and learned about the fundamentals of water system design. And thank you to our volunteer instructors who presented the material.

YEA Social Hour: Date and location to be determined

Please consider joining us for casual networking with other young engineers. More information will be sent via email. If you would like to be added to the email list, contact Chris Lukasiewicz (clukasiewicz@turnerengineering.com).

All members of ASHRAE – Rochester Chapter are invited to join YEA at Ellison Park Frisbee Disc Golf Course. Afterwards, we can head over to Ravenwood Golf Course to join the rest of the chapter for Dinosaur BBQ. If you have them, please bring your own disc golfs or regulation size frisbees. A few spare discs will be available for your use or you can team up with someone.

When: Tuesday, 15 May 2012 – YEA Frisbee Golf

**Location: Ellison Park
Landing Rd N and Ellison Park Rd
Rochester, NY 14625**



**Schedule: 3:00 PM First Throw
4:30 PM Picnic at Ravenwood Golf Club**

**Cost: Frisbee Golf—FREE
Picnic—\$50.00, Please reserve your ticket in advance**

For more information, contact Chris Lukasiewicz: clukasiewicz@turnerengineering.com

YEA RESEARCH CAMPAIGN 2012

YEA – Rochester is joining with Sustainable Performance Consulting, Inc. (SPC) once again for the YEA Research Campaign 2012. Any donations raised by YEA members will be matched dollar-for-dollar (100%) by Sustainable Performance Consulting, Inc. (SPC) to provide funding towards new research projects and research projects already underway. From now until Friday, May 11, 2012 your dollar will provide twice as much research funding thanks to the generosity of SPC. Our total research contributions will be recognized at the May ASHRAE Golf/Picnic held at Ravenwood Golf Club. Even a small contribution will help and your contribution to ASHRAE Research is also tax deductible. Please visit www.ashrae.org (Research Promotion Quicklinks) to make your donation. Together, if we reach a goal of \$150, YEA can be added to the honor roll.

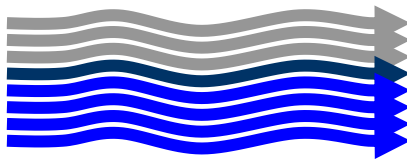
For questions regarding your contribution, please contact our Chapter Research Promotion Chair Jeff Close (jeff.close@pres-services.com or 585-289-6816).



This section of the newsletter is reserved for those firms wishing to advertise their desires to hire from the Chapters Membership.

If you are interested in utilizing this FREE service provided by the Rochester Chapter, please contact our Chapter President, Jeff Ellis (585.232.3440) or by email ellis@airsystemsbalancing.com

This service is available to ASHRAE members for any local firm in our industry looking for knowledgeable persons in the HVAC&R industry.



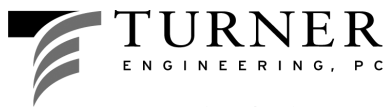
R.F. PECK CO., INC

889 ATLANTIC AVE
ROCHESTER, NEW YORK 14629
Phone: (585) 697-0836 Fax: (585) 697-0839

Engineered Products Salesman

The R.F. Peck Company is a commercial HVAC manufacturer's representative firm serving Upstate New York, Vermont and Western Massachusetts for over fifty years. We are looking for an energetic, self-starting, Engineered Products Salesman for the Greater Syracuse Area. A mechanical engineering degree is preferred but not required.

Email resume to jbrowe@rfpeck.com.



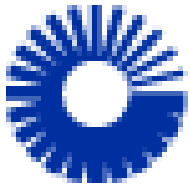
A talent for design—A sense for people

Senior Mechanical Engineer (HVAC)/ Department Manager

Turner Engineering is a multi-disciplined consulting engineering company based in East Rochester, NY. We provide HVAC, plumbing, fire protection, electrical, and communications engineering services for the construction industry. www.TurnerEngineering.com. We design the systems that make health care, institutional, commercial, educational, municipal, and mission-critical facilities efficient, comfortable, and safe.

We are a growing firm and require a Senior Mechanical HVAC Engineer with 8+ years of related experience to lead and manage the mechanical HVAC department. Ideal candidates are energetic, driven, efficient and looking to grow with the organization. Candidates must also be willing to perform the responsibilities associated with a senior engineer. Responsibilities include, but are not limited to: design, calculations, and coordination of HVAC systems for new construction, renovations, and energy upgrades. Responsibilities also include managing, leading and training junior staff. We offer competitive compensation packages and benefits. A detailed job description can also be viewed at www.turnerengineering.com/careers/open-positions

Email resumes to bpitts@turnerengineering.com



Carrier

A United Technologies Company

Carrier Enterprise has an opening in the Rochester Sales Office for an Inside Sales Engineer. Position will be responsible for engineering and sales activities for Commercial HVAC Equipment, including equipment take-off, equipment selections, generating on-time proposals, working with suppliers, and day to day customer interface. Preferably an Associate's Degree or Bachelor's in Mechanical Engineering (other engineering fields or equivalent experience will also be considered). Candidate must communicate effectively, possess ability to interact with customers, and be thorough, accurate, and well organized. Forward resumes to timothy.goetzman@carrierenterprise.com



Are you looking for a firm where you can grow? Do you want to work with a company that values your contributions? CHA, an ENR Top-85 Engineering Firm, is currently seeking a **Mid Level Mechanical Engineer** to join our Rochester, NY office.

The responsibilities include, but are not limited to:

- HVAC design for governmental, commercial and industrial facilities, including Analysis, Equipment selection, Layout design and specifications.
- Responsible for preparation of proposals, design development and implementation, client interaction and QA/QC.

Qualifications include:

- 8-12+ years of Mechanical Consulting Engineering/Design experience is required.
- BSME required.
- Must be proficient in MS Office (Word, Excel and Powerpoint). Experience with Trane Trace 700 and AutoCAD are a plus but not required.
- EIT License is required, PE is preferred.
- Analytical skills, report writing and oral communication skills a must.

As a CHA employee you have options!

- Experience career growth within your field, attend trainings & seminars, or expand your horizons into new areas.
- Participate in the Mentoring program.
- Further your career with professional licensing reimbursement.
- Continue networking with paid dues to technical societies.

To apply, please visit our website at www.chacompanies.com referencing job #2070.

Additional exciting career opportunities in the areas of engineering, landscape architecture, survey, construction, planning and many other professional disciplines available within all of our office locations may also be found on our website.

REQUEST FOR ASSISTANCE WITH ASHRAE/ROCHESTER HISTORY PROJECT



ASHRAE Rochester Chapter Historian, Lee Loomis is embarking upon a project to develop a written history of our Chapter, and he needs your help. If you have any pieces of ASHRAE/Rochester Chapter history; photos, slides, reports, meeting minutes (Committee Meetings, Chapter Meetings or Board of Directors Meetings), event programs (seminars, trade shows, workshops, etc.), please consider offering them to Lee for his project. You may have any of this material returned, if you'd like, otherwise Lee will inventory it, saving that which is memorable, and digitizing some of it, as necessary. So, as you search through your attics, basements and garages, looking for whatever Santa might have hidden for you, and you stumble across some old "ASHRAE Treasures", please drop Lee an e-mail (leeloom@aol.com), telling him of your discovery, and how he might retrieve it for his project. Remember, in this quest for ASHRAE/Rochester history, there is NO SUCH THING AS JUNK; it's all "TREASURE" until he's had a chance to sort it out. Thanks for your help with this important ASHRAE/Rochester history project.

Lee Loomis, Chapter Historian, is hoping that you'll bring your "ASHRAE Treasures" (photos, reports, memorabilia) to the ASHRAE Golf Picnic, or else make an appointment to let him pick these things up. He's assembling a Rochester ASHRAE Chapter History, and needs these items for the collection.

Lee M. Loomis, Historian
ASHRAE/Rochester Chapter

RESEARCH PROMOTION

ASHRAE Research Promotion

The 2011-2012 campaign has four months remaining and Rochester is making good strides to achieve this year's goal. With the investment support of individuals and companies locally we can show ASHRAE our commitment to growing our industry through research.

This year's HONOR ROLL contributors will receive a special ASHRAE Commemorative Coin honoring Lynn Bellenger. Minimum contribution to achieve Honor Roll status for an individual = \$100 and for a company = \$150). Contributions can also be made to the Lynn Bellenger Endowment.

A special thank you to all of this year's contributors:

2011-12 Rochester Chapter Research Donors			
Lynn Bellenger Memorial	ASHRAE Associate	Mr Edward Burns	Honor Roll Donor
SMACNA - Rochester	Major Donor - Antique	Ms Michelle Sommerman	Honor Roll Donor
Turner Engineering	Major Donor - Antique	Mr Jeffrey Close	Honor Roll Donor
Guckian Energy Systems LLC	Major Donor - Antique	Mr Robert Wind, Jr	Honor Roll Donor
Air Systems Balancing & Testing	Honor Roll Donor	Mr Peter Oppelt	Honor Roll Donor
Erdman Anthony & Associates	Honor Roll Donor	Ms Christina Walter	Honor Roll Donor
Genesee Heating	Honor Roll Donor	Mr Ronald Mead	Honor Roll Donor
Mr Jeffrey Ellis	Honor Roll Donor	Mr Robert Moyer	Honor Roll Donor
Mr Thomas Piekunka	Honor Roll Donor		

* Updated 03-21-2012

If anyone is interested in contributing and would like to learn more, please contact me.

Jeffrey Close - Research Promotion Chair
 jeff.close@pres-services.com or 585-289-6816

Mission: To improve the quality of life and to answer tomorrow's questions through research TODAY.

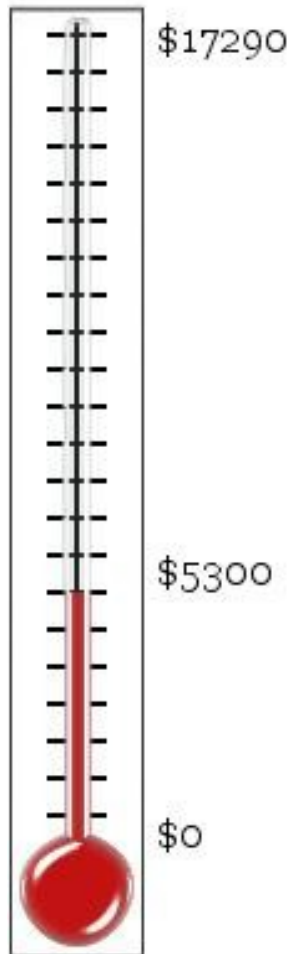
Over \$2million raised annually to help fund \$10million in research projects and student grant-in-aids.

Research is used to update the Society's standards and guidelines.

Contributions come from more than 6,700 members, non-members, and companies.

100% of all funds raised go directly to research projects that support the HVAC&R industry.

Active research projects are conducted all around the world at various universities and private organizations.





Chapter Technology Transfer Committee

It's time to start thinking about the ASHRAE technology awards! The purpose of the tech awards program is threefold:

1. To recognize ASHRAE members who design and/or conceive innovative technological concepts that are proven through actual operating data;
2. Communicate innovative systems designs to other ASHRAE members;
3. Highlight technological achievements of ASHRAE to others, including associated professionals and societies worldwide, as well as building and facility owners.

There are six categories, with awards in each category for new and existing buildings. The categories include Institutional (Educational and other Institutional), Commercial, Health Care, Industrial, Public Assembly, and Residential Buildings.

For each category, first, second, and honorable mention winners may be named. Also, one of the category first place winners may be selected to receive the ASHRAE Award of Engineering Excellence.

In addition to the technology awards program, ASHRAE awards the Milton Garland Commemorative Refrigeration Award for Project Excellence and the Comfort Cooling Award for Project Excellence. The Milton Garland award is for non-comfort cooling applications which highlight new or innovative technologies. As the name implies, the Comfort Cooling award is for comfort cooling applications which highlight innovative or new technologies.

If you have worked on a project that you believe fits into any of these categories, email me at jdavis@turnerengineering.com and I will be happy to assist you with the submittal process.

Jeff Davis, CTTC Chair



**AMERICAN SOCIETY OF HEATING, REFRIGERATING
AND AIR CONDITIONING ENGINEERS**

ROCHESTER, NEW YORK CHAPTER

March 9, 2012

LOCATION: Trane Headquarters Rochester, NY

President	Jeffrey Ellis	X
President Elect/Program	Michelle Sommerman	
Vice President/Tech Session	Robert Wind	X
Secretary Picnic/Golf	Ed Burns	X
Treasurer	Christina Walter	X
Immediate Past President/CRC	Jim Browe	
Awards/Student Activities	Al Rodgers	
Buyers Guide	Chuck White	
Hiistorian	Lee Loomis	X
Board of Gov. (1) Membership	Bill Clark	
Board of Gov. (1)	Beth Smith	
Board of Gov. (1) Newsletter	Jaimee Reynolds	X
Board of Gov. (2)	Eric Smith	X
Board of Gov. (2) Research	Jeff Close	
Board of Gov. (3)	William Murray	
Board of Gov. (3) Attendance	Tim Duprey	X
Website	Kevin Wind	
Refrigeration	Michael Nohle	
Nominating	Jeff Davis	
Valentine's Dance	Jody M. McGarry	
Publicity	Mark Kukla	
YEA	Chris Lukasiewicz	X

Meeting Minutes

Roll Call: The above noted individuals were present.

Call to Order: 12:07 am by Jeff Ellis

Minutes:

Previous Meeting Minutes - Motion made move to receive. Previous meeting minutes approved.

Treasurer Reviewed Budget - Report submitted by Chris Walter.

Program Tech Sessions – Michelle will pick up speaker at airport and bring him to meeting. Chapter will reimburse expenses for speaker. Need to update website for April meeting in lieu of tour. Need to notify Al Rodgers because April is a student meeting.

Membership – Current 245 members * 5 New Members last month and 1 new member this month* Bill will look into membership pins. Side Note: Lee has past presidents hats.

Attendance – Report submitted by Tim. 61 attendees at Feb. meeting; 5 walk-ins.

Student Activities – 2 students attended ASHRAE in Chicago. Chapter reimbursed expenses for both. Jaimee Reynolds has written base line guide on student selection. Guide to be reviewed and written into MOPS at future date.

YEA – Flyers were created to pass out. “Fundamental of Water Design” was well attended (RIT facility was free of charge because students were invited) – 40 people would be beneficial to advance order books for instructors. May want to charge more for future events to cover all costs.

Refrigeration – Speaker lined up for April – more info to come.

Newsletter – CTTC will be in April newsletter. Jaimee to contact Jim Browe about advertizing for Buyers Guide. Golf sponsor & sign-up forms should be in RES.

Historian –Lee is still looking for historical information. Lee will provide a request to Tim for distribution.

Meeting Minutes (continued)

Website – Kevin removed previous months Paypal links to eliminate confusion.

Nominating – No additional information.

Publicity – Mark Kukla to announce names today for 2012/2013 officer nomination.

Valentines Dance – Profit - \$2,877.42

Old Business – Buyers Guide is left in Jim Browe & Chuck White's hands. Jeff to forward SMACNA contact info to Rob for joint meeting next year.

New Business – Logo was selected – Green text (Option 1), Star Chapter – Michelle & Jeff discussed. Michelle to look into a presentation at May meeting.

Next Meeting - April 5th at 12:00 pm Location: Trane

The meeting was adjourned



WELCOME TO OUR NEW MEMBERS

Mr Joseph Dorney
Mr. Punit Pradeep Shah

Chamberlin Rubber Company, Inc

2011-2012

Chapter #	Chapter Name	Chapter Members	Member Promotion	Student Activities	Research Promotion	Chapter Technology Transfer	History	Chapter Operations	Chapter PAOE Totals
11	Rochester	243	210	175	705	50	110	50	1300



Target Audience:

- Any Direct or Indirect AM who has not had the opportunity to attend GTP
 - Perhaps a local new hire - that can't commit to 6-months at GTP
 - Someone who was promoted from within
 - A new hire that came from outside our industry
- Any BAS AE, PM, PA, Application Specialist or Estimator who wants to broaden their base in the fundamentals

Primary Benefit: Students will enjoy learning as much practical knowledge as possible about Air Conditioning Fundamentals. Students won't waste a great deal of time in theory. The typical student can immediately apply what he/she learns upon returning to their office. Past attendees have boosted their overall confidence and found many ways to apply their recently acquired knowledge.

2012 Course Offerings (Rochester, NY): (these classes are 3-days; Tuesday - Thursday)

[x] Feb 14-16 '**Airside Fundamentals-I**' (Load Design and Psychrometrics)

[x] Mar 13-15 '**Airside Fundamentals-II**' (Duct Design, Fans & Fan Laws & Acoustics)

[] Apr 17-19 '**Refrigeration Fundamentals**' (Refrig Basics, Refrig Piping, Refrig & Our Environment)

[] May 15-17 '**Systems Fundamentals**' (HVAC Systems, Dehumidification, IceStorage-LowTempAir, Bldg Pressurization)

[] Jun 12-14 '**Energy Efficient Design Fundamentals**' (Chiller-Side, Air-Side, System Controls, Energy Recovery)

[] Aug 7-9 '**Product Fundamentals**' (AHU, WSHP, RTU, Chillers, Fan Coils, UV)

[] Sep 18 & Oct 2-30 '**Introduction to Air Conditioning Fundamentals**' (6-Tuesday evening series covering each of the above topics in a 3-hour 'big-picture overview')

Note: For more information about each of these classes, log onto BeckerLearning.com

Registration Deadline: Each course will be filled on a first-come-first-reserved basis.

Payment Deadline: Complete Payment must be received prior to the start of the class.

Contact: Joe Becker, Becker Learning / 5980 Sheppard Road / Dansville, NY 14437
Phone: (585) 317-0000 Email: Joe@BeckerLearning.com

More Details for 3-day courses:

Where: We will hold the 3-day classes at a Homewood Suites Hotel in the greater Rochester area - exact location to be determined no later than 2-weeks prior to the start of class. You will be able to reserve a room for the Becker Learning rate of \$104/night if you tell them you are part of the Becker Learning group.

* Class Registration: 10 or less, **Henrietta** - 2095 Hylan Drive, Rochester, NY 14623 - (585) 334-9150

* Class Registration: >10, **Greece** - 400 Center Place Drive, Rochester, NY 14615 - (585) 865-8534

Time: We will start each morning at 8:00 AM and end by 5:00 PM (except Thursday when we end by 4:00 PM for travelers)

Food: Lunch, mid-morning and mid-afternoon snacks & drinks are provided.

What is not included: Transportation, other meals & lodging.

Travel: Arrival: Since the seminar starts at 8:00 a.m., plan to arrive the night before.

Departure: You can book flights out of Rochester International Airport as early as 5:15 p.m. on Thursday since both of our Hotel locations are less than 10-minutes from the airport.

More Details for 6-night Fall Intro Series:

Where: The specific Henrietta, NY location will be decided no later than 2-weeks before the class & attendees will be emailed the appropriate information with plenty of notice. The class will run from 5:00 - 8:00 pm. No meal is provided, so attendees should catch dinner before the class starts.

Registration: Please fill out this form for each person attending, and mail along with a **Check or Purchase Order** (made out to 'Becker Learning') to:

Becker Learning / 5980 Sheppard Road / Dansville, NY 14437

2012 Courses: Airside-I Airside-II Refrigeration Systems

(check all that apply) Energy Eff. Design Products Fall 6-night Intro Series

Name: _____ Title: _____

Trane Sales Office: _____

Address: _____

Phone: ()

Email: _____

Type	# of Courses	\$/course	Total Cost \$	Check # or PO #
3-day		\$1,100		
6-night		\$550		

Authorizing Person

Printed Name	Signature	Date

*****If a PO is given, full payment must be received prior to the first day of class.**

Cancellation Policy:

- If someone cancels 60-days prior to the start of the class => no cancellation charge.
- If someone cancels 30-60 days prior to the start of class => 50% cancellation charge
- If someone cancels less than 2-weeks before the start of class, or simply doesn't show up => charged the full amount

Teaching Methodology:

Similar to the way Joe taught nine classes in the Graduate Training Program of The Trane Company, students will learn a concept and then immediately apply this new knowledge with an application problem. Quiz/testing will also be used to measure the overall effectiveness of the teaching. In this way, the program receives continual improvement through direct feedback.

About the Instructor:

Joe Becker is a graduate of the University of Wisconsin-Madison with degrees in Naval Science and Industrial Engineering (1979). He is also a Graduate from the U.S. Naval Nuclear Power School at Mare Island, California (1975). Joe is a registered Professional Engineer.

After nine years in the Navy, Joe resigned his Commission in the Civil Engineer Corps. Since graduating from GTP's class of 83-II, he worked as a Systems Engineer in C.D.S., Marketing Engineer in the Variable Air Volume Product Group, Manager of Technical Training in GTP, Sales Engineer, Sales Manager in Rochester/Syracuse & ISL for NE Territory. Joe currently works part-time for Trane's NE Territory and provides technical training through Becker Learning.

April 19, 2012 1:00 PM-4:00 PM EDT

Dedicated Outdoor Air Systems: *A Path to Balancing Energy and IEQ*

Hear leading experts discuss the role of Dedicated Outdoor Air Systems in the overall HVAC system and describe various DOAS equipment configurations, characteristics, and applications. This webcast will identify common design and operational pitfalls, and cover challenges unique to DOAS.



Presenters



Ron Jarnagin, 2011-12
ASHRAE President
Staff Scientist | Pacific North-
west National Laboratory |
Richland, WA



Tim McGinn, PE., LEED AP
Principal | DIALOG | Calgary, AB,
Canada



Stan Mumma, Ph.D., PE.
Professor Emeritus | Pennsylvania
State University | University Park, PA



John Murphy, LEED AP
Applications Engineer | Trane |
La Crosse, WI

How to Participate

- You may register to view the Webcast on your PC
- You may host a webcast viewing site for your colleagues
- View the webcast at a site

PDH Credits

Three (3) Professional Development Hours (PDHs) or three (3) AIA Learning Units may be awarded to viewers who complete the "Participant Reaction Form" by May 3, 2012.

Sponsored by:



Brought to you by the ASHRAE Chapter Technology Transfer Committee

For more information about the program, presenters, continuing education credits, sponsorships, and DOAS resources please visit us at www.ashrae.org/doaswebcast

ASHRAE Learning Institute 2012 Spring Online Course Series

2 WAYS TO REGISTER

Internet: www.ashrae.org/onlinecourses

Phone: Call toll-free at 1-800-527-4723 (US and Canada) or 404-636-8400 (worldwide)

Note: You may register up to 24 hours prior to an online course. Courses are in US Eastern Standard Time.



District Cooling & Heating Systems
Mon, March 19, 2012 – 1:00 pm to 4:00 pm ET

Basics of Combined Heat & Power
Wed, March 21, 2012 – 1:00 pm to 4:00 pm ET

Evaluating the Performance of LEED®-Certified Buildings
Wed, March 28, 2012 – 1:00 pm to 4:00 pm ET

Commissioning Process & Guideline 0
Wed, April 4, 2012 – 1:00 pm to 4:00 pm ET

* **Complying with Standard 90.1-2010: HVAC/Mechanical**
Mon, April 9, 2012 – 1:00 pm to 4:00 pm ET

* **Complying with Standard 90.1-2010: Envelope/Lighting**
Wed, April 11, 2012 – 1:00 pm to 4:00 pm ET

* Take both Standard 90.1 courses and save 20% on the price of these courses



The following courses are comprised of two parts. Registrants must attend both parts in order to receive CEU/PDH credits. Archiving is available.

Humidity Control: Principles and Applications – Part 1
Mon, March 26, 2012 – 1:00 pm to 4:00 pm ET

Humidity Control: Principles and Applications – Part 2
Mon, April 2, 2012 – 1:00 pm to 4:00 pm ET

Implementing ASHRAE Standard 189.1-2009 – Part 1
Mon, April 16, 2012 – 1:00 pm to 4:00 pm ET

Implementing ASHRAE Standard 189.1-2009 – Part 2
Thurs, April 19, 2012 – 1:00 pm to 4:00 pm ET

Integrated Building Design – Part 1
Mon, April 23, 2012 – 1:00 pm to 4:00 pm ET

Integrated Building Design – Part 2
Wed, April 25, 2012 – 1:00 pm to 4:00 pm ET

ASHRAE HVAC Design Workshops

2 Workshops, 5 Days of Intense Instruction

May 21-25, 2012 • ASHRAE Foundation Learning Center • Atlanta, GA

HVAC Design: Level I – Essentials

May 21-23, 2012

ASHRAE's HVAC Design: Level I - Essentials workshop provides intensive, practical education for designers and others involved in delivery of HVAC services. Developed by industry-leading professionals, the workshop provides participants with training design to accelerate their evolution into effective member on a design, construction or facilities maintenance team. Gain the fundamentals and technical aspects to design, install and maintain HVAC systems.

HVAC Design: Level II – Applications

May 24-25, 2012

ASHRAE's HVAC Design: Level II - Applications workshop provides advanced instruction on HVAC system designs for experienced HVAC designers or those who completed the HVAC Design: Level I Essentials workshop. Gain an understanding of system design incorporating the application of Standards 55, 62.1, 90.1 and 189.1.

Creating Effective, Highly Skilled Engineering Team Members

- Gain knowledge to make immediate contributions to design projects
- Participate in in-depth, practice-focused training
- Learn from industry leaders selected by ASHRAE
- Receive free bonus resources valued at over \$200

Attendees of the HVAC Design Workshops can earn continuing education credits. Contact the relevant governing body for more information.



Visit www.ashrae.org/hvacdesign to register

ASHRAE Certification Programs

- Building Energy Assessment Professional (BEAP)
- Building Energy Modeling Professional (BEMP)
- Commissioning Process Management Professional (CPMP)
- Healthcare Facility Design Professional (HFDP)
- High-Performance Building Design Professional (HBDP)
- Operations & Performance Management Professional (OPMP)

For more info, visit
www.ashrae.org/certification



ASHRAE Student Membership Application

What You'll Get With Your ASHRAE Student Membership!

What's "Cool" In ASHRAE

- ASHRAE promotes energy efficiency, savings and recovery
- ASHRAE reports on building controls, automation and integration
- ASHRAE focuses on green building issues and green technology
- ASHRAE maintains standards for indoor air quality
- ASHRAE promotes solar and other alternative energy sources
- ASHRAE offers certification programs, online learning opportunities and courses and seminars at ASHRAE Conferences

How Can ASHRAE Help You?

- Provide access to new technology
- Offer professional development opportunities
- Create opportunities for networking
- Offer online continuing education programs and eLearning programs

Student Member Benefits

- Access to members-only web pages
- Discounts on ASHRAE Handbooks
- Monthly ASHRAE Journal - print and digital
- HVAC&R Industry and Society Connections eNewsletters
- Complimentary ASHRAE Annual and Winter Conference registration (AHR Expo, Student Program, Technical Sessions)
- Virtual online HVAC&R resume posting, job and internship searching program

ASHRAE Student Member Opportunities

- Society and chapter-level scholarships for both undergraduate and graduate engineering students
- Discounts for student members on select publications, go to www.ashrae.org/bookstore for more information
- Student Design Competition
- Networking with local ASHRAE Chapters
- Senior Undergraduate Project Grant Program
- At the student branch level, you'll enjoy meeting other students with similar interests - if your school hasn't yet started a student branch, take charge and contact a faculty member and ask for help on getting started!

You can continue your student membership after college with the ASHRAE SmartStart Program. After you graduate, you pay \$20 for the first year, \$50 for the second and the third years before advancing to regular member dues!

**Join ASHRAE students on Facebook
Visit www.ashrae.org/students to join!**



FIRST NAME:

LAST NAME:

DATE OF BIRTH (mm/dd/yyyy)

Current Mailing Address: (this will be where all correspondence will be sent unless otherwise specified)

Street Address: _____ Apt. # _____ City: _____

State/Province: _____ Postal Code: _____ Country: _____

Email: _____ Alternate email: _____ Phone: _____

Permanent Mailing Address: (during the Summer Months and after graduation)

Check if Current Address is the same as Permanent Address

Street Address: _____ Apt. # _____ City: _____

State/Province: _____ Postal Code: _____ Country: _____

Email: _____ Alternate email: _____ Phone: _____

ASHRAE protects contact information provided by its members and customers. To view ASHRAE's privacy policy visit www.ashrae.org/privacy-policy.

All student applicants must have the name and member number of an ASHRAE member serving as their student sponsor. If your Student Branch Advisor is an active Associate or Full member, he/she can serve as your sponsor. If you need assistance locating a sponsor, please email students@ashrae.org or call 678-539-1212. Also, you must list the name, phone and email address of your faculty advisor or course instructor.

Sponsor Name: _____ ASHRAE Member #: _____

Advisor/Instructor: _____ Phone: _____

Email: _____

To receive your subscription to the ASHRAE Journal, please answer the following questions by entering the appropriate codes in the spaces provided.

Which best describes your firm? _____

- 11. Consulting Engineering
- 12. Architect/Architectural & Eng Services
- 15. Design/Build
- 21. Contractor
- 26. Property Mgmt & Dev
- 31. Industrial Facility
- 41. Commercial Facility
- 42. Government, Healthcare, Education
- 43. Utility
- 51. Manufacturer/HVAC&R Equipment
- 61. Manufacturer's Representative
- 62. Sales Engineering
- 71. Wholesaler or Distributor
- 83. Library
- 84. Technical, Professional or Trade Association
- 86. Student ***
- 91. Other (Please Specify) _____

Which best describes your title? _____

- B. President
- C. Partner
- D. Associate
- E. Owner
- F. Vice President
- G. Vice President Eng, Chief Engineer
- K. Design Engineer
- L. Project/Application Engineer
- O. Facility Engineer/Manager
- P. Research/Development Engineer
- R. Sales Engineer, Sales
- S. Purchasing Agent
- T. Draftsperson
- U. Estimator
- W. Technician
- X. Instructor, Professor
- Y. Student ***
- Z. Librarian
- ZZ. Other (Please Specify)

ASHRAE Society Dues include \$6.00 for ASHRAE Journal. This amount is not deductible from Membership dues.

I would like to participate in the activities of the _____ ASHRAE Chapter.

School Name: _____

Street Address: _____ City _____ State: _____

Country: _____ Postal Code _____

Expected Graduation Date: _____

Full time: Part time: Degree: _____

*Classification: Freshman Sophomore Junior Senior Masters/PhD.

ASHRAE Student Membership \$20.00 USD

ASHRAE Handbook - Fundamentals IP SI

(you will receive the most current edition of Fundamentals)

More than 900 pages of HVAC&R technical information and it includes the CD! (List Price \$195)

Student Member Price: \$49.00 USD \$ _____ USD

Total \$ _____ USD

*Additional books are available at ashrae.org/studentbookstore

*Please allow up to 30 days to receive new member packets. For U.S. book orders, allow 3-5 business days from processing. For international locations and Canada, allow 7-10 business days from processing.

Please complete the ENTIRE application to ensure accuracy. Incomplete applications will NOT be processed.

Method of payment: VISA / Master Card American Express Diner's Club Check or money order enclosed*

Card Number: _____ Expiration Date _____ CW No. _____ Amount: _____

Signature: _____ Date: _____

Print Name (as it appears on card): _____

*Checks will be accepted in U.S and Canadian funds. Credit Card payments will be accepted in U.S. funds only.

CRC 2011 Motions Update

January 29, 2012

This is POST Chicago Winter Meeting

Ref: ASHRAE / Region I / CRC 2011 / Motions UPDATE

Delegates & Alternates - This E-Mail is a "courtesy" update report of the current status of the Society related motions that you passed at CRC 2011, which was held in New York City back in August.

To refresh everyone, all the motions that were passed and directed towards Region I operations, become effective immediately upon passage. No further approvals needed.

Motions that were passed and considered "Society" related are then are hand carried by me into ASHRAE Members Council.

Since I have a seat on Members Council, it is my job to also represent the wishes of Region I, which are conveyed through the motions that were passed at the CRC.

The first Members Council Meeting after the CRC was held in early November (Nov 5 & 6), 2011 at ASHRAE Headquarters in Atlanta, GA.

When the motions come into Members Council, they can take a number of paths by being referred to other committees

in ASHRAE for action, or Members Council could vote to terminate a motion at that time.

Since motions represent the needs & desires from the grassroots ASHRAE membership, motions from CRC's are taken very seriously, so if there is a vote to not take any action on a motion, it is done with much thought.

Typically, motions that are voted to be NOT acted on (ie defeated), are for typical situations where for example: A very similar motion from another CRC already exists, and one motion would be a duplicate, or the action requested in the motion is planned or has already been taken, etc.

After the Fall Members Council meeting, any referred motion gets to it's respective committee before the Winter Meeting, then during committee meetings at the Winter Meeting, the committee

Will then address the motion. If the motion is passed, it goes back to Members Council at their meetings during the Winter Meeting for action by MC. If the motion fails in committee, then a report is still provided to Members Council, including any action items issued.

Members Council can then act on the motion at it's meetings during the Winter Meeting.

Below is a list of the 4 Society related motions that came from Region I's CRC 2011 held in New York City, including the current status.

Shortly, Society will also post the motions status on it's web site, located at this link:

<http://www.ashrae.org/members/page/crcmotions>

CRC 2011 Motions Update (Cont'd)

Please note that the following info has NOT yet been updated on the ASHRAE Motion Status web site:

Motion Identification No. 01-007-01-08182011 (New Jersey Chapter)

Motion: Remove from the CRC Manual, in section A, page 4, under the heading “Protocol Regarding Society Representatives”,

second paragraph; the sentence “The DRC and Conference Arrangements Committee are responsible for making room reservations for the official visitors.”

Visitors will make their own reservations.

Motion was assigned to Regional Operations Subcommittee,
which recommended approval of this motion.

Members Council Meeting - Held Nov. 5, 2012

Action Taken

Vote taken by full MC - Motion Passed unanimously on a verbal vote.

Next revision of the CRC manual will be updated to reflect the passage of this motion.

Staff has ownership of this motion.

Below is a copy from the MC’s 11/5/2011 Meeting Minutes regarding this motion:

Please note that an action item was issued to staff.

>>>”**MOTION 3 PASSED.** (unanimous voice vote, chair not voting)

AI #1 Staff to revised Section A, page 4, under the heading “Protocol Regarding Society Representatives,” of the CRC Manual as indicated in Motion 2.”<<<

Motion Identification No. 01-008-01-08192011 (New York Chapter)

Motion: On the membership application, change “If you know, please indicate your preferred local chapter”,
to:

“Do you want to be assigned to the Chapter where you live, Chapter where you work, or other Chapter
(indicate which Chapter).

Check appropriate box.”

Motion was assigned to Regional Operations Subcommittee,
which recommended defeat of the motion for several reasons.

First, is that this motion is very similar to a motion sponsored by the New York Chapter that was passed in
CRC 2010, which was passed at the time by Members Council in 2010.

That 2010 motion is currently being implemented (see below).

Regional Operations Subcommittee also previously assigned an action item to staff to see if this motion could
be implemented.

The result was the below Secretary Note.

Secretary Note: Currently there is an opt-in option online now.

Members Council Meeting - Held Nov. 5, 2012

Action Taken

Vote taken by full MC - Motion was defeated unanimously on a verbal vote.

CRC 2011 Motions Update (Cont'd)

Below is info copied from the MP Committee Report to Members Council dated 1/21/2012 – Please note that even though the motion was defeated, an action item to staff was initiated:

>>>”**MOTION 4 WAS DEFEATED.** (Unanimous voice vote, chair not voting)

AI #2 An action item was assigned to staff to determine if the paper membership application can be revised since the current online form defaults to opt-in and the chapter’s location is listed in the drop down box.

Response to Members Council: New applications with the logo were already designed prior to receiving this action item. With the next round of changes, we will incorporate a way for applicants to know the geography, name and cost of chapter so they can list it on their applications. There will be a system where they will go to the web and have a listing of chapter name, location and cost for each new member.”<<<

For reference, here is the CRC 2010 Motion from the New York Chapter that was passed and is being implemented right now: "The New York Chapter moves that the membership applications (both online and paper versions) be revised to allow renewing and prospective members to be assigned to multiple chapters."

Motion Identification No. 01-009-01-08182011 (Northeast Chapter)

Motion: Where centralized training is to be given for chapter chairs, the centralized training shall occur on the Wednesday, Thursday and/or Friday immediately prior to the summer Annual society meeting of ASHRAE at the host hotel or center for that meeting.

Motion was assigned to Regional Operations Subcommittee, which recommended defeat of motion, due to multiple reasons, including the fact that RVC's themselves are being trained at the Society Annual Meeting in June - typically on the Friday just prior to the official opening of the Annual Meeting. Since the RVC's are being trained, they would be unavailable to participate in training the Chapter Chairs, and since the training depends on the RVC's as trainers, logistically, the Chapter Chair training would be difficult to set up at the Annual Meeting on either a Friday or Thursday.

Logistically, to implement this training, the Committee Meetings & RVC training would have to be held even earlier - Tuesday & Wednesday, which would require the RVC's & Staff to arrive at the Annual Meeting even earlier, at additional cost for hotel, meeting rooms, etc.

Other issues include fact that many grassroots committees (RP, MP, CTTC, SA) have their committee meetings held just prior to the start of the Annual Meeting both on the Thursday & Friday, so that would pose a conflict as well.

These meetings must occur during this time frame in order for business to properly flow upwards to the committee's respective Councils, etc., whose meetings are held beginning on Saturday.

Finally, many chapter members choose not to attend Society meetings, preferring either to attend the CRC Training, or Centralized Training.

CRC 2011 Motions Update (Cont'd)

Members Council Meeting - Held Nov. 5, 2012

Action Taken

Vote taken by full MC - Motion was defeated unanimously on a verbal vote.

Note: At San Antonio (Annual Meeting – June 23-27, 2012), Membership Promotion will be holding their Chapter MP Chair Centralized Training conducted on Sunday, June 24, both morning & afternoon. June 24 is the second day of the Annual Meeting.

Motion Identification No. 01 - 009 - 03 - 08192011 (Northeast Chapter)

Motion: Change the RP PAOE structure such that Hi Five achievement is replaced with 10% above Goal, and Challenge achievement is replaced with 20% above Goal.

Motion was forwarded to the Society RP Committee for action.

At Chicago RP Committee meeting held 1/21/2012, **motion was defeated**,

However, the below info is copied from the RP Committee Report to Members Council:

>>>“Motion was defeated but concerns of Chapter were noted and a modified definition of “Challenge Goal” will be implemented starting in the 2012-13 Campaign Year. The modified definition of Challenge Goal will be “105% of High Five OR 120% of current assigned Goal”.<<<

CRC 2011 Society related motions update completed.

Thank you!

Spencer Morasch

DRC

ASHRAE

Region I

ASHRAE Society Updates

Spring 2012



Do you have questions that we can answer in the next ASHRAE Society Update? Send an email to kfulcher@ashrae.org and your question will be forwarded on to staff.

New Changes to Members Council

During the 2011 fall meeting in Atlanta, a motion was approved to remove the Director and Regional Chairs (DRCs) as members of Members Council and to have them sit on the Board of Directors only. The DRCs will be replaced by a new position from each region called the Region Members Council Representative. Pending approval by the membership for an ASHRAE Bylaws change, this will become effective July 1, 2013.

New Insurance Coverage for Chapters

The Manual for Chapter Operations (MCO), Section 4.6 was updated to include a section for ASHRAE Chapter Event Insurance. This coverage is provided at the chapter's expense to cover sporting events such as racing, skiing, firearms, boating, mechanical bulls and other activities. See the MCO for full details or visit the ASHRAE website <http://www.ashrae.org/society-groups/chapters/Manual-for-Chapter-Operations> and click on the link under "MCO Bookmarked Sections and Appendices."

New Member Benefit

Beginning July 1, 2011, the decision was made to provide a complimentary 12-month subscription to ASHRAE Handbook Online to all new Members and Associates with an election date of July 1, 2011 and onward, since they will not receive their print or CD Handbook until June, 2012. The new members and associates will receive an email message with

instructions on how to access their complimentary Handbook Online subscription. This is a one-time benefit for new members, and at the end of their subscription, they will be prompted to renew the Handbook Online at the \$49 member rate.

Two chapter Resources are available online:

Centralized Training for MP:

<http://www.ashrae.org/society-groups/committees/membership-promotion-centralized-training>

Membership Promotion Blog

Visit our blog for training and resources - provide feedback as well!

<http://ashraemptraining.wordpress.com/>

Airmail Only \$10 (USD)

Members outside the United States will be happy to learn Airmail delivery of the ASHRAE Journal is now only \$10. ASHRAE encourages all members outside the U.S. to select this option on their membership renewal to ensure faster delivery of the industry's leading magazine, ASHRAE Journal. Click [here](#) to renew your membership.



ASHRAE Society Updates

Spring 2012



Leadership U participants at the Chicago Winter meeting.

Leadership U – San Antonio

Have you ever wondered what ASHRAE Officers do at the ASHRAE Winter & Annual Conferences? Here is your chance to find out! Through Leadership U (offered by the YEA Institute), a handful of YEA members are selected for each conference to be matched up with Society Officers and participate in all of their events and board meetings, including social activities. Leadership U not only allows you to experience a conference like an Officer, but it is also a great opportunity to network and form connections with those active in ASHRAE.

If selected to participate in Leadership U, the costs of attending the Conference (transportation, lodging and registration) will be covered by ASHRAE. In addition, those selected will document their experiences and share them with the YEA Committee, their chapter and their region.

Submit your application today! All applications must be received by the close of business **April 16, 2012**. To learn more about this opportunity or if you have any questions, visit www.ashrae.org/yea.

HVAC Design Essentials Workshop Scholarship

Presented by the ASHRAE Learning Institute, the three-day HVAC Design Essentials Workshop allows attendees to focus on both the fundamental and technical aspects of HVAC design in commercial buildings, providing practical strategies for HVAC

designers and others involved in delivery of HVAC services. The next HVAC Design Essential Workshop will be held May 21-23, 2012 at ASHRAE Headquarters, Foundation Learning Center.

To encourage attendance by young professional ASHRAE members, the YEA Institute offers one full scholarship for attendance to the HVAC Design Essentials Workshop (Level I of the workshop only). The full cost of registration to Level I of the workshop will be covered by ASHRAE.

If you have an interest in attending this workshop, this scholarship is the perfect opportunity for you. All applications must be received by the close of business **April 9, 2012**.

RP Chairs- Visit the RP Blog

Messages to donors, non-donors, reminders, graphics, and articles about Research are available at the RP blog (<http://ashraerp.wordpress.com/>)

CRCS Set For Spring 2012

Region VI - May 3 – 6

Minnesota Minneapolis, MN

Visit the website –

<http://ashrae6.blogspot.com/>

Region VIII - April 26 – 28

Northeastern Oklahoma Tulsa, OK

Visit the website -

<http://region8.ashraeregions.org/crc.htm>

Region XI - May 10 - 12

Manitoba Winnipeg, MB

Visit the website-

<http://region11.ashraeregions.org/>

Please contact Vickie Grant at ASHRAE Headquarters for questions or to request more information about CRCS.

ASHRAE Society Updates

Spring 2012

Registration Open for ASHRAE Dedicated Outdoor Air Systems Webcast!

Registration is now open at www.ashrae.org/doaswebcast for the April 19, 2012 Webcast, "Dedicated Outdoor Air Systems – A Path to Balancing Energy and IEQ." This free webcast is being brought to you by ASHRAE's Chapter Technology Transfer Committee with support from Valent Air Management Systems, Rotor Source, Inc., Engineered Air, Munters, and Heat Pipe Technology.

Webcast Archive Available!

If you are unable to participate in the live webcast, the program replay will be archived online until May 3, 2012. Registration will be necessary to view the archived program. The webcast presenters are:

Ron Jarnagin ASHRAE President 2011-12, Staff Scientist Pacific Northwest Laboratory Richland, WA

Tim McGinn, P.E., LEED AP, Principal DIALOG Calgary, AB, Canada

Stanley Mumma, Ph.D., P.E., Professor Emeritus Pennsylvania State University University Park, PA

John Murphy, LEED AP, Applications Engineer Trane, La Crosse, WI

There is no fee for registration. To register and learn about the webcast program, continuing education credits, and ASHRAE dedicated outdoor air systems resources, visit www.ashrae.org/doaswebcast. If you have questions about the webcast, call 678-539-1200 or email ashrae-webcast@ashrae.org

Modeling for a Sustainable Future

ASHRAE seeks to advance the industry's ability to more accurately model and simulate a building's energy use.

Building on the successful Energy Modeling Conference format in April 2011, this conference will begin with an interactive session with modeling software developers presenting common modeling scenarios on how their specific software can model a scenario, whether there are any limitations and what might be the best work around and exceptional modeling practices to obtain acceptable results when the tool cannot model the scenario "out-of-the-box".

Click here for the [Conference Announcement and Call for Presenters](#)



*ASHRAE conferences provide great opportunities
for knowledge sharing and networking.*